



INDICATIONS TO ENTER THE CHURCH



Entry is prohibited for people with flu / respiratory symptoms, body temperature equal to or higher than 37.5 °C or has been in contact with SARS-CoV-2 positive people.

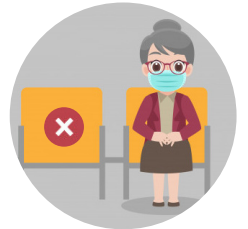
1 Sanitise your hands with the disinfectant gel and always wear the mask (without valve), covering entirely your nose and mouth.



2 Always maintain a **safe interpersonal distance**: at least 1.5 m when moving.



3 Take place only where permitted: distance of at least 1 m.



4 Keep with you children under 6 years old (one child per adult) or people who need accompaniment.



5 Leave the church as soon as the personal visit or celebration is over, always taking care to keep a safe distance.

Capacity of this church

